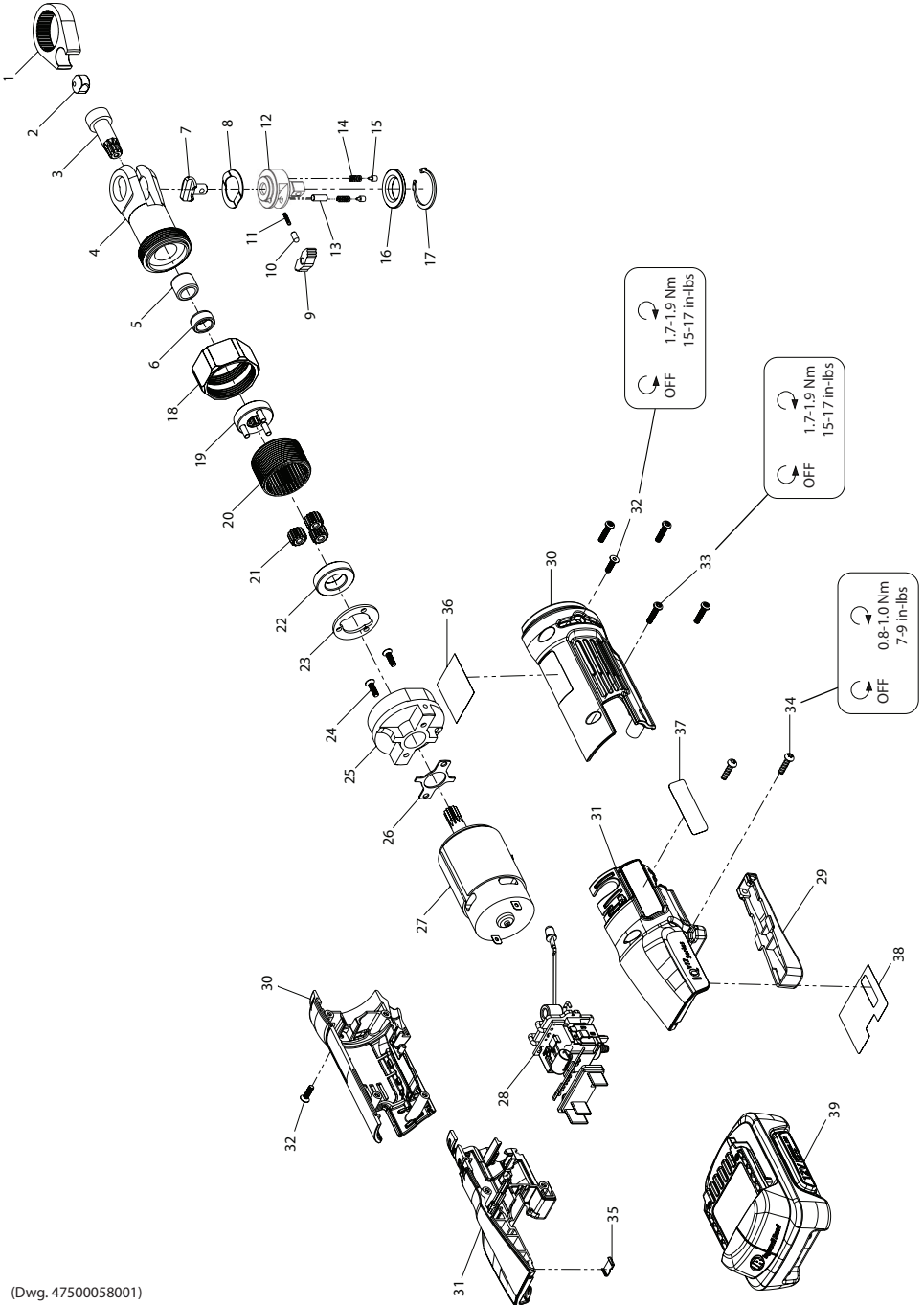


R1000 Series, Cordless Ratchet Wrench - Exploded View



(Dwg. 47500058001)



47502735001
Edition 2
January 2014

R1000 Series, Cordless Ratchet Wrench - Parts List

Item	Part Description	Part Number	Item	Part Description	Part Number
*	Ratchet Head Kit (includes items 1~17)		20	Internal Gear	---
	For R1120	R1120-TRK1	21	Planet Gear (3 per kit)	---
	For R1130	R1130-TRK1	22	Bushing	---
1	Yoke	R1000-K37	23	Thrust Washer, Planet Gear	---
2	Drive Bushing	R1000-K36	*	Electric Motor Kit (includes items 24~27)	R1000-K54
3	Crankshaft	R1000-K35	24	Motor Screw (2 per kit)	---
4	Ratchet Housing	---	25	Motor Connector	---
5	Crankshaft Needle Bearing	---	26	Gasket	---
6	Crankshaft Bushing	---	27	Motor	---
7	Reverse Button	---	28	Switch-LED-PCB-Battery Connector Module	R1000-K93
8	Wear Washer	---			
9	Pawl	---	29	Trigger Lever	R1000-273
10	Lock Pin	---	*	Housing Kit (includes items 30~38)	R1000-K40
11	Lock Spring	---	30	Aluminum Housing	---
12	Anvil Assembly	---	31	Plastic Housing	---
	For R1120	R1120-A44	32	Motor Connector Screw (2 per kit)	---
	For R1130	R1130-A44	33	Aluminum Housing Screw (4 per kit)	---
13	Pawl Retaining Pin	---	34	Plastic Housing Screw (2 per kit)	---
14	Friction Spring (2 per kit)	---	35	Housing Clip	---
15	Friction Pin (2 per kit)	---	36	Warning Symbol Label	---
16	Thrust Washer, Anvil	---	37	Warning Text Label	---
17	Retaining Ring	---	38	Information Label	---
18	Coupling Nut	R1000-27	39	12V Li-ion Battery Pack	BL1203
*	Pawl Kit (includes items 9, 10, 11 & 13)	R1000-K43	*	Label Kit (includes items 36, 37 & 38)	R1000-K99
*	Ratchet Housing Assembly (includes items 4, 5 & 6)	R1000-K322	*	Fastener Kit (includes items 24, 32, 33 & 34)	R1000-K105
*	Spring Kit (includes items 8, 14, 15, 16 & 17)	R1000-SK	*	Battery Charger	BC1110
*	Planetary Gearing Kit (includes items 19~23)	R1000-GK	*	Storage/Carrying Bag	IQV12-BAG
19	Spindle Assembly	---			

* Not illustrated

Parts and Maintenance

When the life of the tool has expired, it is recommended that the tool be disassembled, degreased and parts be separated by material so that they can be recycled.

Tool repair and maintenance should only be carried out by an authorized Service Center.

Refer all communications to the nearest **Ingersoll Rand** Office or Distributor.

Related Documentation

For additional information refer to:

Cordless Ratchet Wrench Product Safety Information Manual 80232929.

Cordless Ratchet Wrench Product Information Manual 47502734001.

Manuals can be downloaded from ingersollrandproducts.com.